

# PRODUCT DATA SHEET



# GF500

**Flight Simulator Cockpit**

# Flight Cockpits

Product Name : GF500

Product NO :GSC-F50-CPASBB-01

Product Position : Flight Simulator Cockpit

## SPECIFICATION

Product Category:	Flight Simulator Cockpit
Rank:	Premium
Dimensions:	600x1320x1100mm (23.6"x51.9"x43.3")
Weight Capacity:	120kg (264lbs)
Frame Type:	Fixed Frame
Frame Material:	Aluminum Alloy
Frame Surface Finish:	Powder Coating,Sand-blasted Aluminum Anodic Oxidation
Frame Color:	Black & Fine Texture Black
Seat Type:	Fiberglass Bucket Seat with Cotton Fabric Cover
Seat Width:	460mm (18.1")
Seat Gliding Track:	220mm (8.7")
Seat Height Range:	25mm (0.98")
Seat Back Tilt Range:	+6° ~-6°
Pedal Panel Tilt Range	0° -30°
Cable Management:	Yes
RGB LED Lighting Strip	16.8 million colors (20 lighting modes)

# Flight Cockpits

Product Name : GF500

Product NO :GSC-F50-CPASBB-01

Product Position : Flight Simulator Cockpit



## FEATURES

- Aluminum and steel frame: offers exceptional rigidity and stability for immersive gaming
- Adjustable fiberglass bucket seat: glides forward and back and reclines to offer the key element of the ideal driving position over long gaming hours
- Dedicated flight cockpit for maximum simulation immersion
- Suited for combat flight, general aviation, commercial flight, and space exploration users
- Wide range of adjustments to tailor your flight experience
- Compatible with flight electronics such as yokes, joysticks, rudders, and throttles for all major brands
- Compatible with Thrustmaster®, Logitech, Saitek®, Honeycomb, Virtual Fly, Crosswind, and other flight accessory brands

# Flight Cockpits

Product Name : GF500

Product NO :GSC-F50-CPASBB-01

Product Position : Flight Simulator Cockpit

## ALL NEW TECH

Robust aluminum  
and steel frame,  
unparalleled  
stability.

Adjustable seat  
for long-lasting  
comfort.

Adjustable pedal  
mount, body-  
conforming  
support.

Compatible with  
multiple brands,  
versatile choices.



# Flight Cockpits

Product Name : GF500

Product NO :GSC-F50-CPASBB-01

Product Position : Flight Simulator Cockpit



## **Vibe RGB Rhythm pickup lighting strip**

This RGB light flows in sync with accelerating racing speed to create an immersive experience.

# Flight Cockpits

Product Name : GF500

Product NO :GSC-F50-CPASBB-01

Product Position : Flight Simulator Cockpit

## Ultimate Gaming Stability

The GF500 is equipped with a sturdy aluminum profile and steel structure, offering exceptional rigidity and stability for an immersive gaming experience.



# Flight Cockpits

Product Name : GF500

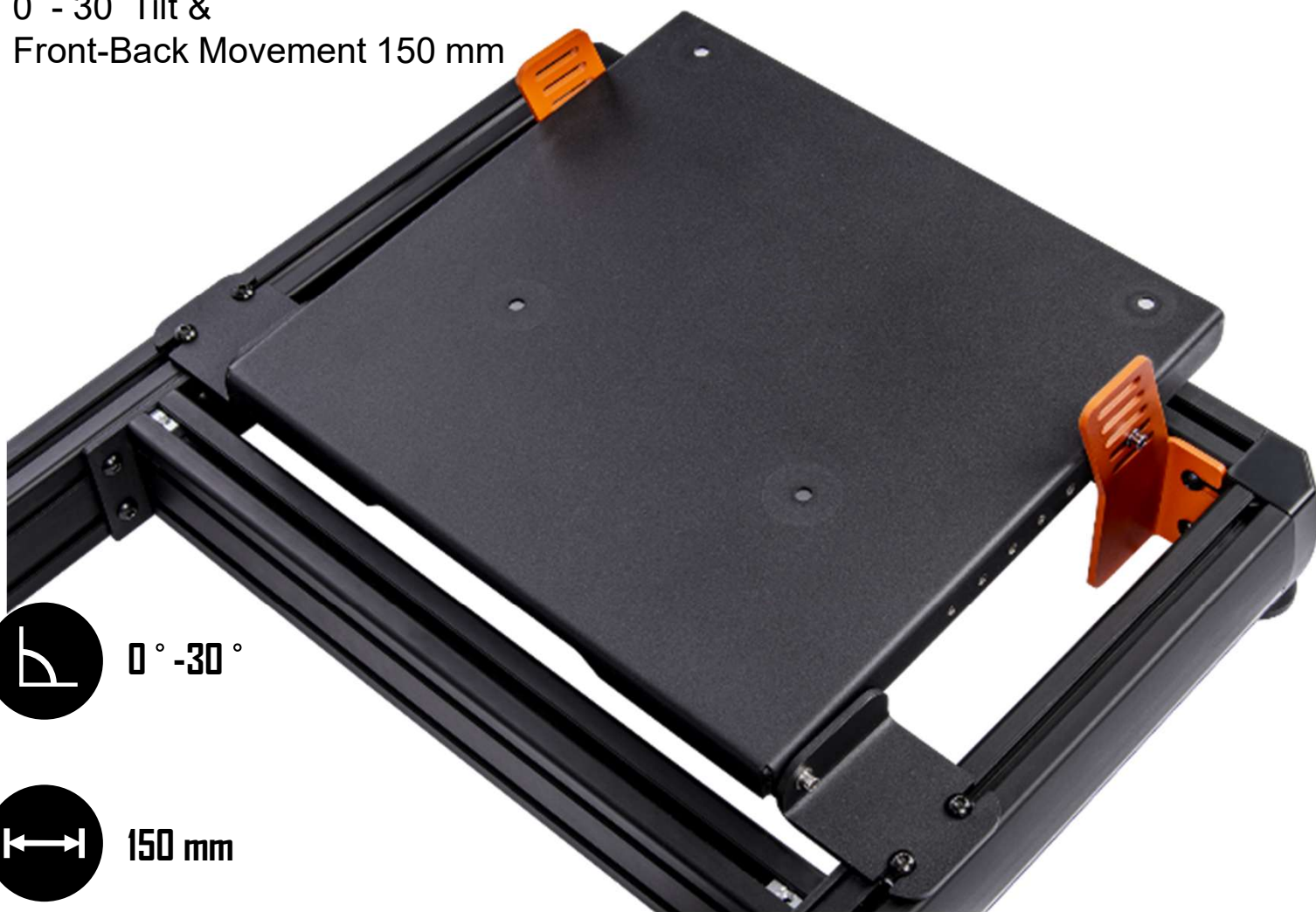
Product NO :GSC-F50-CPASBB-01

Product Position : Flight Simulator Cockpit

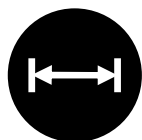
## Pedal Mount

0° - 30° Tilt &

Front-Back Movement 150 mm



0° - 30°



150 mm



# Flight Cockpits

Product Name : GF500

Product NO :GSC-F50-CPASBB-01

Product Position : Flight Simulator Cockpit





# Flight Cockpits

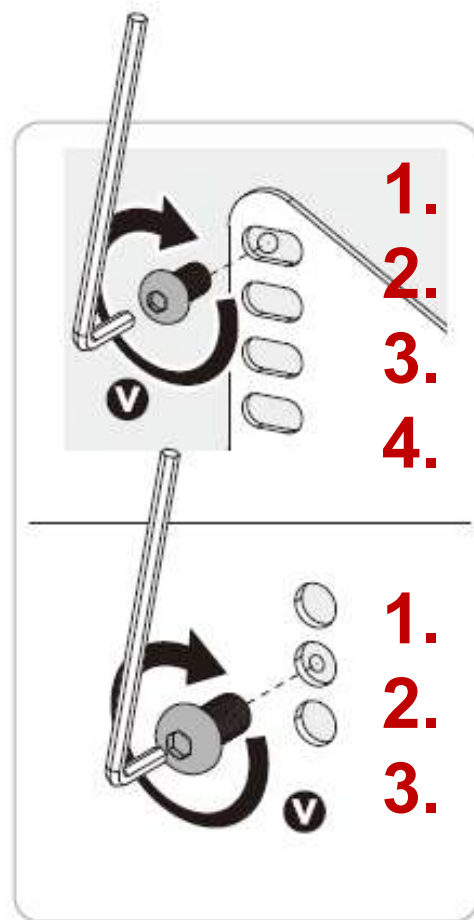
Product Name : GF500

Product NO :GSC-F50-CPASBB-01

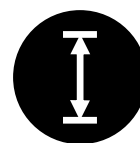
Product Position : Flight Simulator Cockpit

## Fiber Glass Racing Seat

Adjustable seat tilt angle and a slight height variation.



+6° ~ -6°



30 mm

# Flight Cockpits

Product Name : GF500

Product NO :GSC-F50-CPASBB-01

Product Position : Flight Simulator Cockpit

## Pre-Drilled Mounting Holes

Compatible with flight electronics such as yokes, joysticks, rudders, and throttles for all major brands.

Compatible with Thrustmaster®, Logitech, Saitek®, Honeycomb, Virtual Fly, Crosswind, and other flight accessory brands.



## Flight Cockpits

Product Name : GF500

Product NO :GSC-F50-CPASBB-01

Product Position : Flight Simulator Cockpit

### GEAR SHIFTER MOUNT FOR COCKPIT

Based on personal preferences, the gear shifter mount can be installed on both the left and right sides.  $+16^{\circ}\sim-16^{\circ}$  tilt adjustment better fits gamers' habits. Pre-drilled mounting holes are compatible with most popular gear shifters.



# Flight Cockpits

Product Name : GF500

Product NO :GSC-F50-CPASBB-01

Product Position : Flight Simulator Cockpit

## DIMENSION



# Flight Cockpits

Product Name : GF500

Product NO :GSC-F50-CPASBB-01

Product Position : Flight Simulator Cockpit

## DIMENSION





# Flight Cockpits

Product Name : GF500

Product NO :GSC-F50-CPASBB-01

Product Position : Flight Simulator Cockpit

## DIMENSION



# Flight Cockpits

Product Name : GF500

Product NO :GSC-F50-CPASBB-01

Product Position : Flight Simulator Cockpit

## WHAT'S SUPPORTED

FLIGHT PLATE
Thrustmaster 16000M / TCA Airbus Sidestick
Thrustmaster HOTAS Warthog Stick / Winwing Orion 2 HOTAS
Thrustmaster HOTAS Warthog Throttle / Winwing Orion 2 Throttle
Thrustmaster TCA Quadrant Airbus Edition Throttle
Thrustmaster TCA Throttle Quadrant Boeing Edition
Thrustmaster TWCS Throttle
Logitech G X56 Throttle/HOTAS
Logitech X52 Throttle/HOTAS
Turtle Beach VelocityOne Flightstick
Virtual Fly TQ3
Virtual Fly TQ6
Virtual Fly V3rnio
VKB Gladiator NXT
VKB Gunfighter PRO MKII
Virpil Mongoos T-50CM2 / Warbird Base
Virpil Mongoos T-50CM2 Throttle
Virpil Rotor TCS Plus Base
Winwing Gemini Throttle



# Flight Cockpits

Product Name : GF500

Product NO :GSC-F50-CPASBB-01

Product Position : Flight Simulator Cockpit

## WHAT'S SUPPORTED

HOTAS PLATE
Thrustmaster HOTAS Warthog Flight Stick
VKB Gunfighter PRO MKII
VPC MongoosT-50CM2 Base
Winwing Orion 2 HOTAS
Winwing Super Libra

YOKE PLATE
Turtle Beach VelocityOne Yoke
Virtual Fly Yoko / Yoko+
Thrustmaster TCA Yoke Boeing Edition

PEDALS PLATE
Thrustmaster TPR Rudder

# Flight Cockpits

Product Name : GF500

Product NO :GSC-F50-CPASBB-01

Product Position : Flight Simulator Cockpit

## PACKAGING INFO

- Carton size (L x W x H) : 121.5(L) x 62(W) x 79(H) cm
- Net weight : 46.105 kg
- Carton gross weight : 50.135 kg
- Cuft : 21.02
- PCS/Ctn : 1
- Part Number : GSC-F50-CPASBB-01
- EAN : 4711475647824
- UPC : 841163097830
- Package Contents : GF500 Racing Simulator Cockpit X 1  
Warranty card X 1  
Assembly & User Manual X 1

# Flight Cockpits

Product Name : GF500

Product NO :GSC-F50-CPASBB-01

Product Position : Flight Simulator Cockpit

## PACKAGING INFO

### A Package

- Carton size : 119.5(L) x 59.5(W) x 27(H) cm
- Carton gross weight : 36.2kg
- PCS/Ctn : 1
- Package Contents : stand

### B Package

- Carton size : 98(L) x 60(W) x 48(H) cm
- Carton gross weight : 9.8 kg
- PCS/Ctn : 1
- Package Contents : Chair